

INSTALLATION INFO for DNA filter P-BM12S08-01
For: BMW K 1200 LT/RS/GT 97'-08'

The DNA High Performance filter P-BM12S08-01 is designed to replace the BMW stock replacement PAPER filter element.
The DNA can be used for road, Off road and track use.

To install or later remove your DNA filter for cleaning it, please follow the detailed info listed below:
(we recommend that the installation should be carried out by a trained mechanic)

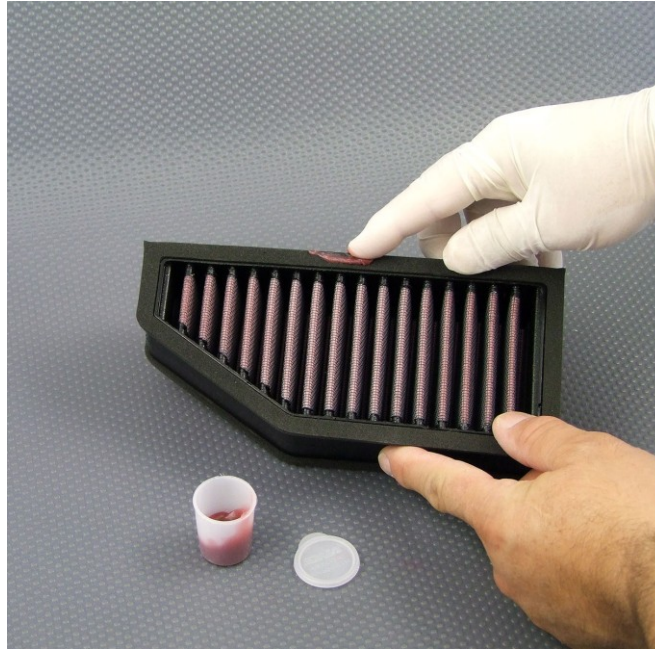
1. Remove the stock filter from the bike following the instructions found in BMW's service manual.

Pay attention to remove carefully the old filter, so no debris falls in the clean side of the air box.

ATTENTION: Do not drop the bolts in the air box.

2. Before installing the DNA filter apply DNA air filter sealing Grease (supplied) on **both** the sealing gaskets of the DNA filter.

The DNA air filter sealing Grease will help the filter slide in place and seal perfectly.



NOTE: We recommend using latex gloves to apply the DNA sealing grease.

4. Install the DNA filter in the air box, screw back in place the air box cover using the 4 stock screws (do not over tighten) and you are done.

The above procedure should be followed every time the filter is removed for servicing.

Always use the Genuine DNA service kit PN: DSK2001 (includes detailed info) to service the DNA High Performance Filter.

This filter should be serviced every 15.000 km.

WARNING: Do not use foam filter oil to re-oil the DNA filter, the filter will clog!

www.dnafilters.com

Made in EU / Greece

The manufacturer and seller make no warranties express or implied which extend beyond the description of the goods contained herein. Any description of this product is for the purpose of identifying it and shall not be deemed to create an express warranty.